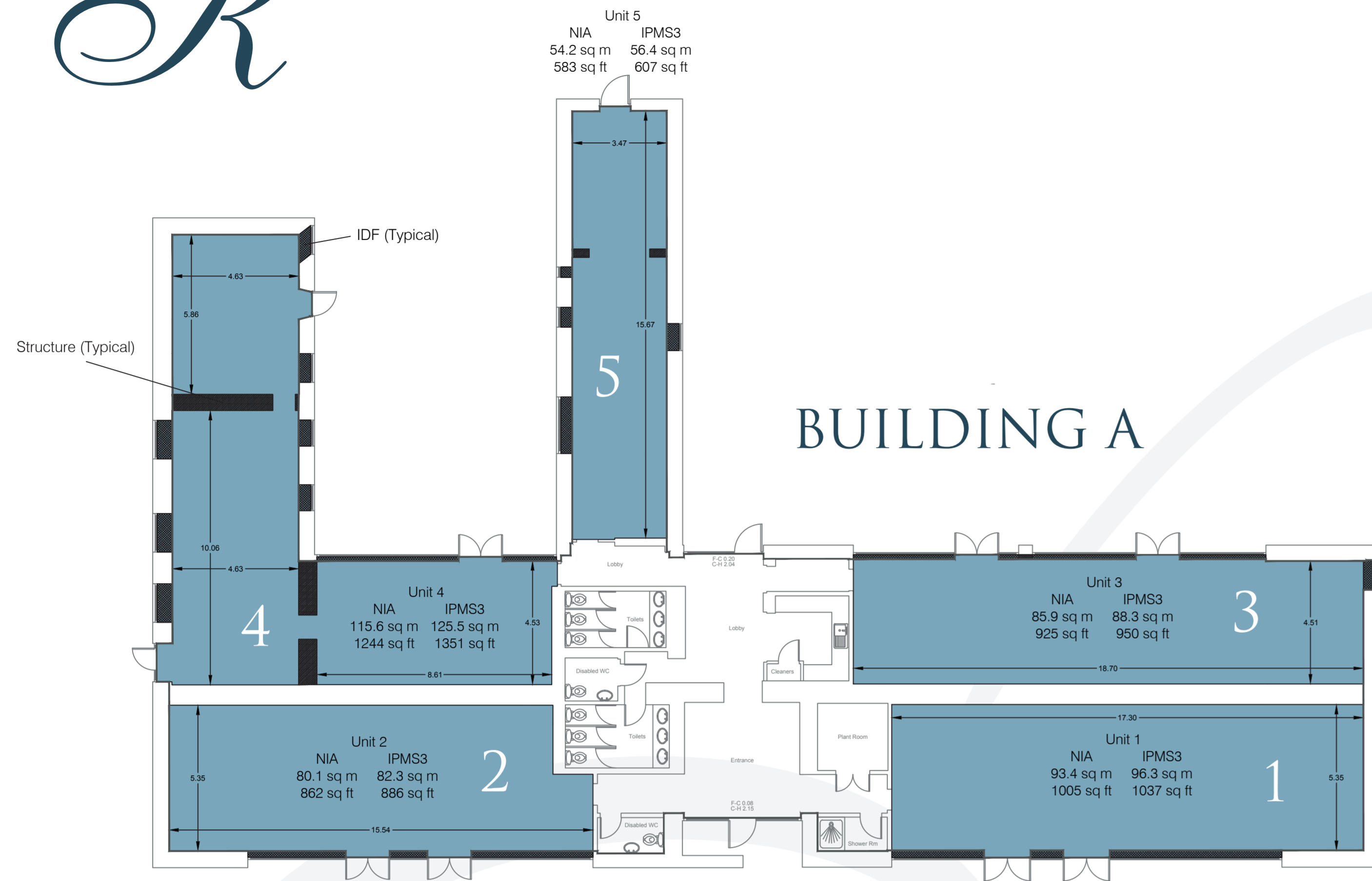




# KIRTLINGTON business centre



## SIZING - Sq Ft/ Metres

Office 1 = 1037 sq ft (96.30 sq m)	Office 6 = 862 sq ft (80.07 sq m)
Office 2 = 886 sq ft (82.30 sq m)	Office 7 = 523 sq ft (48.62 sq m) - GF
Office 3 = 950 sq ft (88.30 sq m)	Office 8 = 761 sq ft (70.68 sq m)
Office 4 = 1351 sq ft (125.50 sq m)	Office 9 = 490 sq ft (45.55 sq m)
Office 5 = 607 sq ft (56.40 sq m)	Office 10 = 885 sq ft (82.22 sq m)
	Office 11 = 762 sq ft (70.81 sq m)
	Office 12 = 371 sq ft (34.44 sq m)
	Office 14 = 632 sq ft (58.70 sq m)
	Office 15 = 552 sq ft (51.31 sq m)

Nb. All floor areas are approximate

## TENANTS

### Building A

MV Kelly Ltd. (Offices 1 & 3)  
2BScientific Ltd. (Offices 2 & 4)  
Pivotal Scientific (Office 5)

### Building B

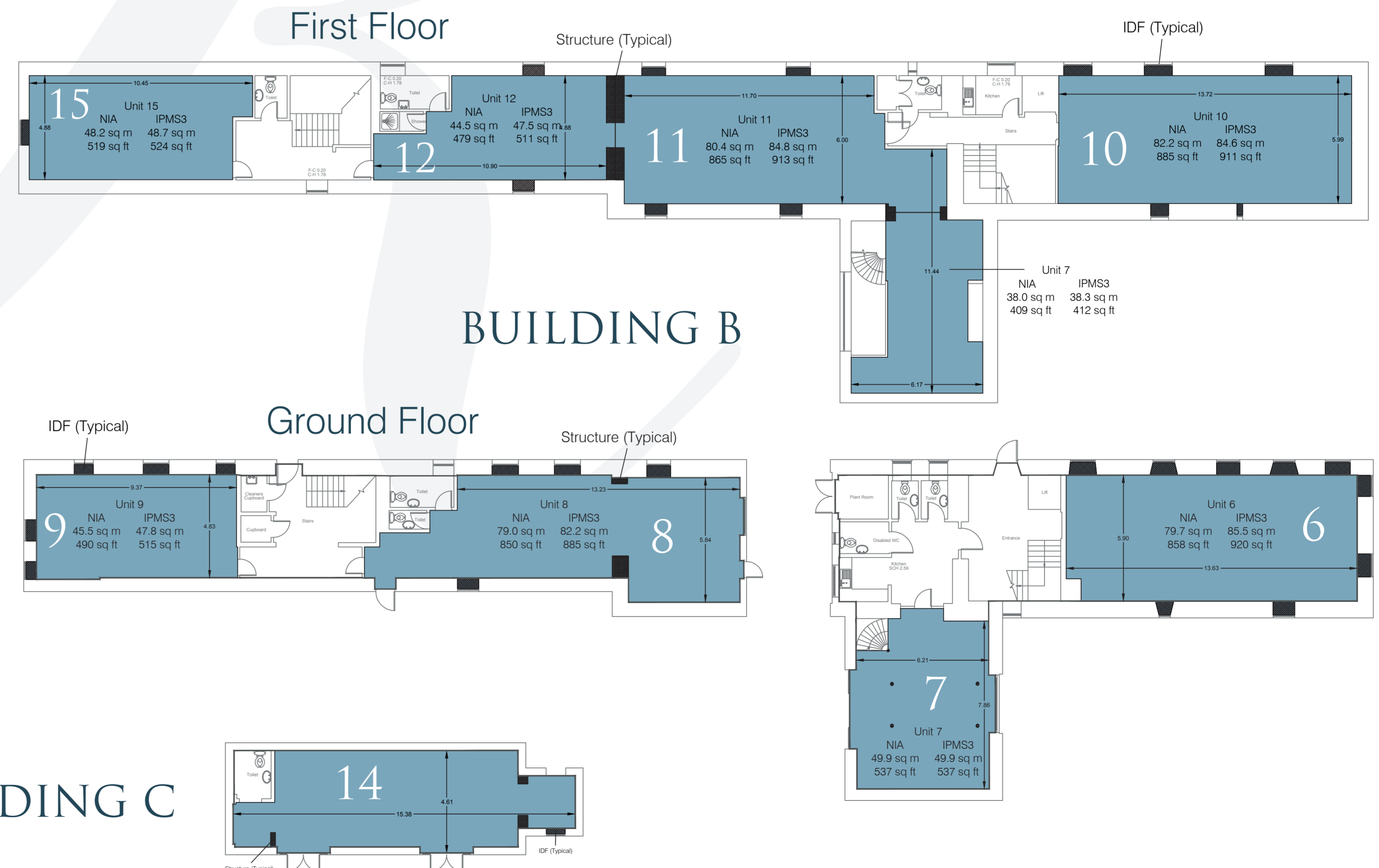
TVM UK Animal Health Ltd (Office 7, 11 & 12)  
Noviniti Ltd. (Office 6)  
Louise Holt Design Ltd. (Offices 8 & 9)  
Oxford Conversis Ltd. (Office 10, Building B)  
Available (Office 15)

### Building C

Oxfordshire Gardener Ltd (The Garden Barn, Building C) Bright  
Creative Marketing Agency (The Garden Barn, Building C)

### MANAGEMENT OFFICE:

Becky Fifield - +44 (0) 7854 941335  
offices@kirtlingtonbusinesscentre.co.uk



(Not To Scale)